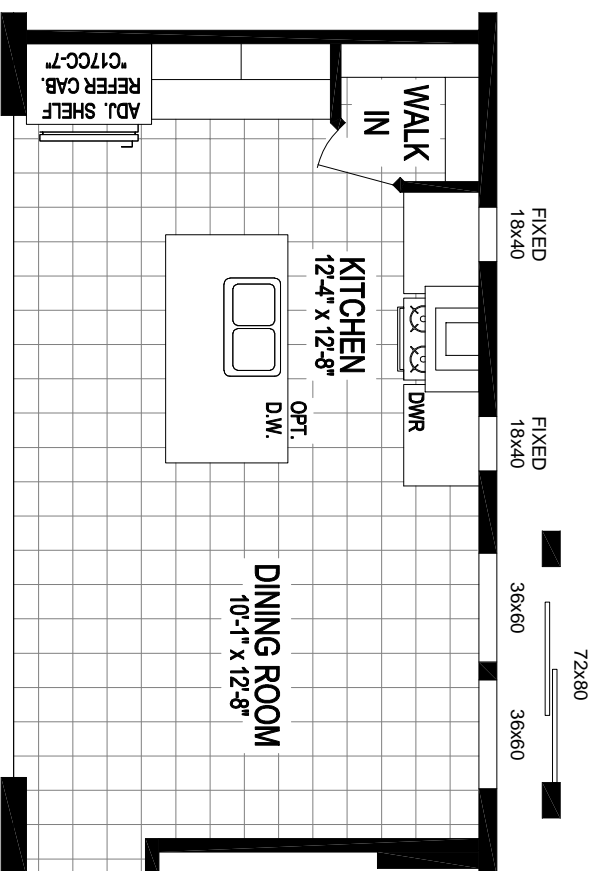
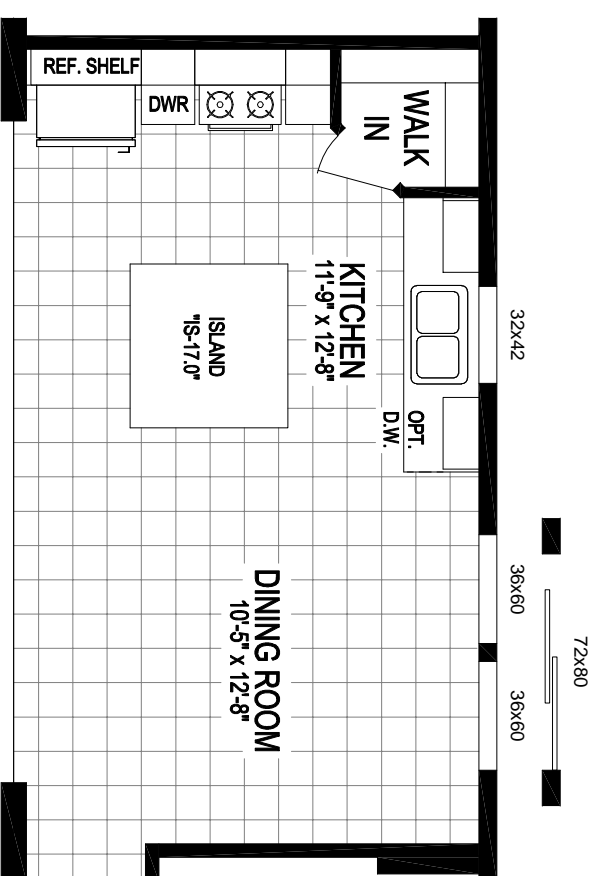


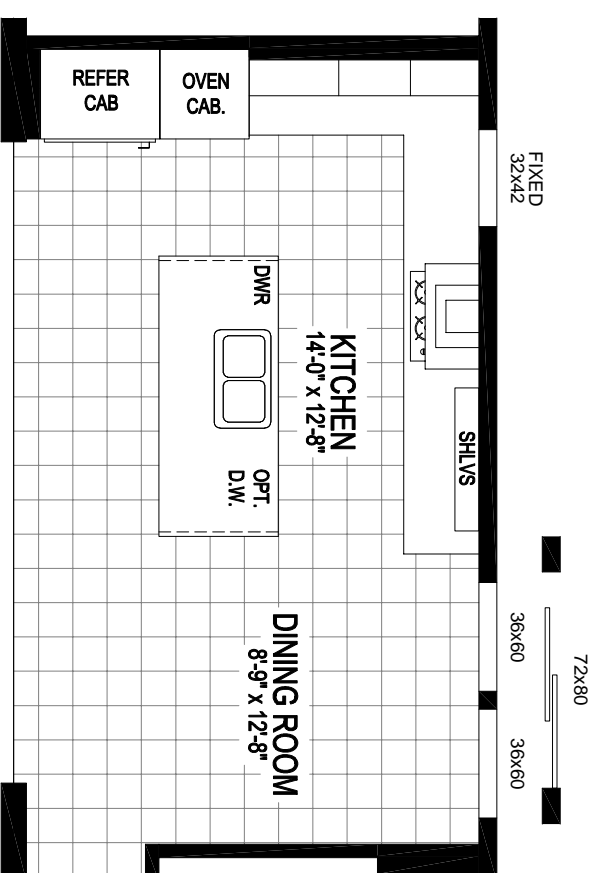
TITLE: 20-6028-9002		CMIH MANUFACTURING WEST	
DRAWN BY: BM	DATE: 1/30/20	437 N. Main Street, Montgomery, IN 46340	
SERIES: HERITAGE	LAST REVISED: 2/20/20	PH: 514.625.1500 FAX: 514.625.1599	
SCALE: 3/16" = 1'	CALC REF:	SHEET: 20-6028-9002	
11/14/2014 6:34 PM		L:\07 - Literature\2020 Literature Files\Heritage20-6028-9002.dwg	



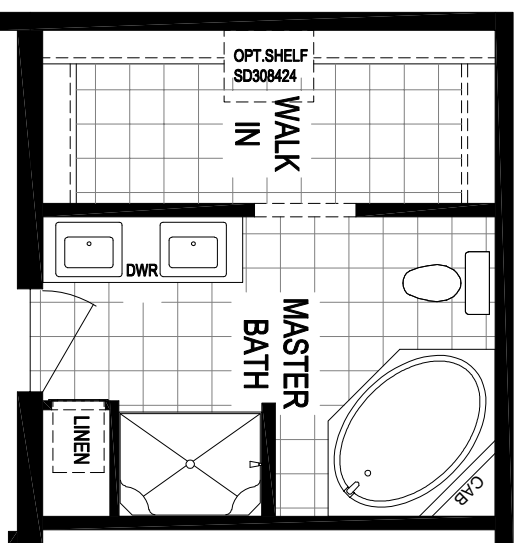
QUARTZ COUNTERTOP KITCHEN #2



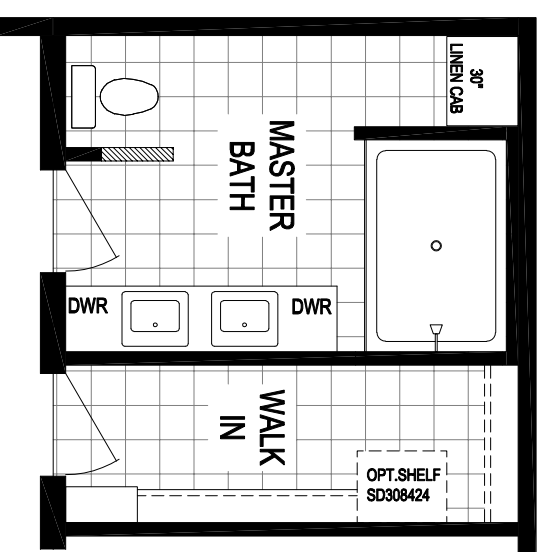
QUARTZ COUNTERTOP KITCHEN #1



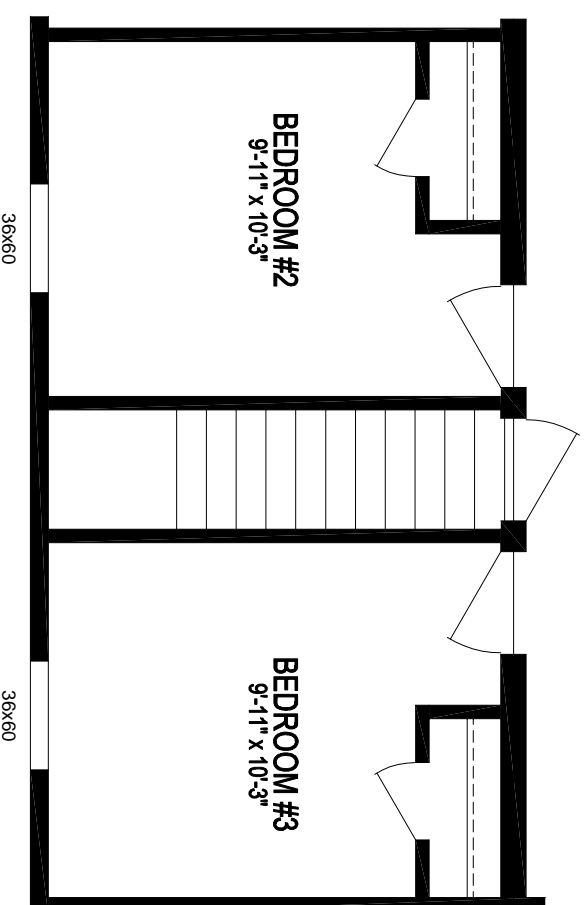
HIGHLAND PARK
KITCHEN OPTION



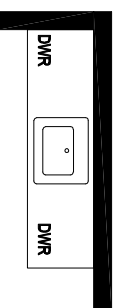
DELUXE BATH OPTION "A"



OPTIONAL MASTER BATH
w/ 72" CERAMIC SHOWER



OPTIONAL BASEMENT STAIRWELL



HIGHLAND PARK
BATH 1 VANITY

Floor Plan Options

Heritage Collection
 Model 6028-9002
 1620 Square Feet - 3 Bed / 2 Bath

TITLE:	20-6028-9002			CNH MANUFACTURING WEST
DRAWN BY:	BM	DATE:	1/30/20	437 N. Main Street, Hickory, NC 28601
SERIES:	HERITAGE	LAST REVISED:	2/20/20	PH: 813.625.1500 FAX: 813.625.1599
SCALE:	3/16" = 1'	CALC REF:		
	11/14/2014 6:34 PM	L:\07 - Literature\2020 Literature Files\Heritage\20-6028-9002.dwg		
SHEET:	20-6028-9002			