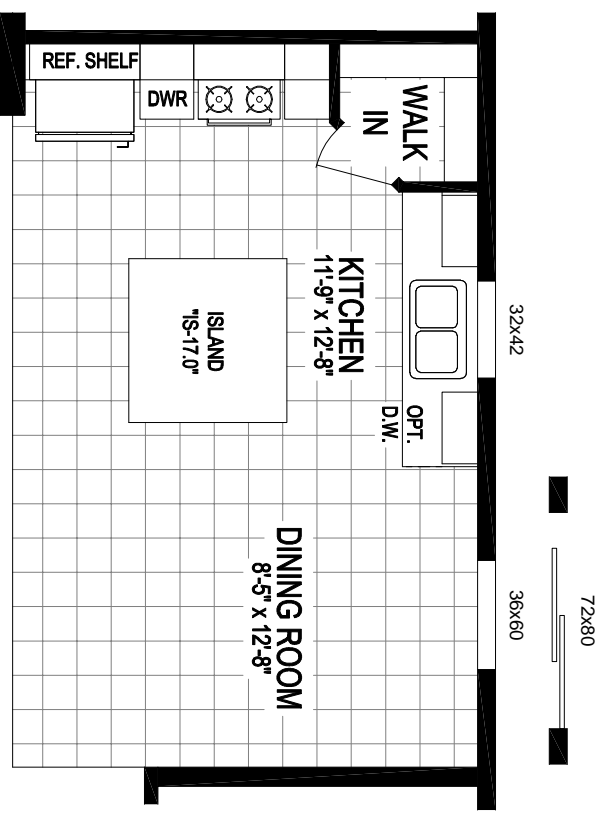


Heritage Collection

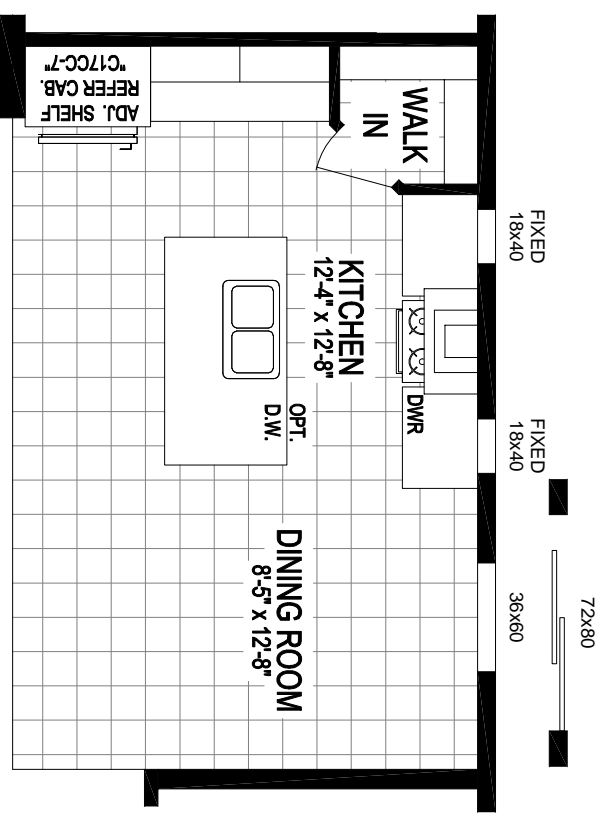
Model 5628-9034

1512 Square Feet - 3 Bed / 2 Bath

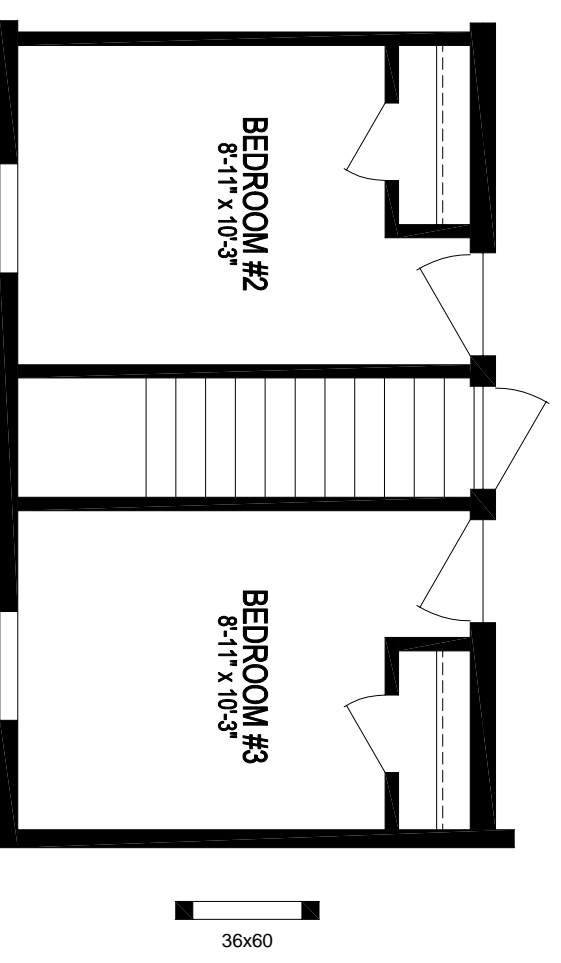
TITLE: 20-5628-9034		CMIH MANUFACTURING WEST	
DRAWN BY: BM	DATE: 1/29/20	437 N. Main Street, Madbury, NH 03040	
SERIES: HERITAGE	LAST REVISED: 1/30/20	PH: 603.825.1500 FAX: 603.825.1599	
SCALE: 3/16" = 1'	CALC REF:	SHEET: 20-5628-9034	
6/29/2011 10:52 AM		L:\07 - Literature\2020 Literature Files\Heritage20-5628-9034.dwg	



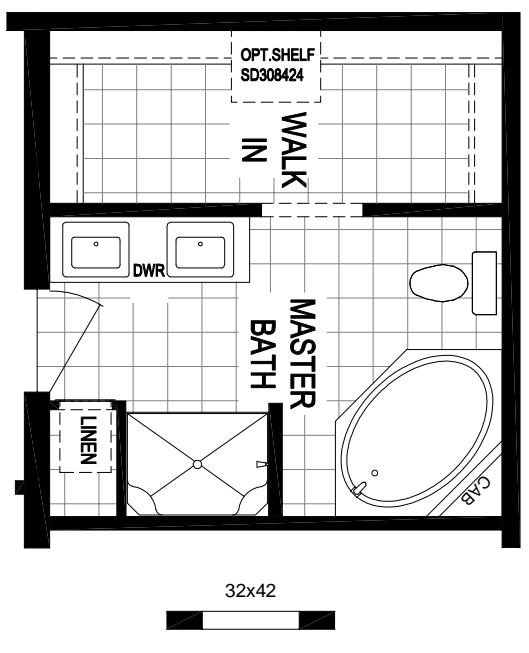
QUARTZ COUNTERTOP KITCHEN #1



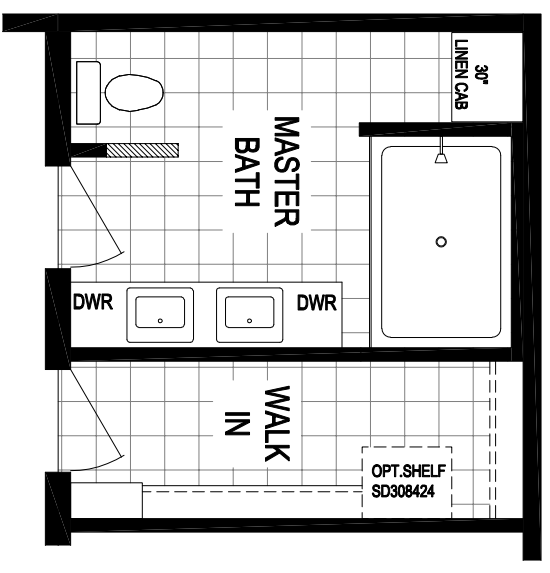
QUARTZ COUNTERTOP KITCHEN #2



OPTIONAL BASEMENT STAIRWELL



DELUXE BATH OPTION "A"



OPTIONAL MASTER BATH
w/ 72" CERAMIC SHOWER

Floor Plan Options

Heritage Collection
 Model 5628-9034
 1512 Square Feet - 3 Bed / 2 Bath

TITLE:	20-5628-9034			CMIH MANUFACTURING WEST
DRAWN BY:	BM	DATE:	1/29/20	437 N. Main Street, Medford, NJ 08500
SERIES:	HERITAGE	LAST REVISED:	1/30/20	PH: 973.682.1500 FAX: 973.682.1589
SCALE:	3/16" = 1'	CALC REF:		
6/29/2011 10:52 AM	L:\07 - Literature\2020 Literature Files\Heritage20-5628-9034.dwg			SHEET: 20-5628-9034